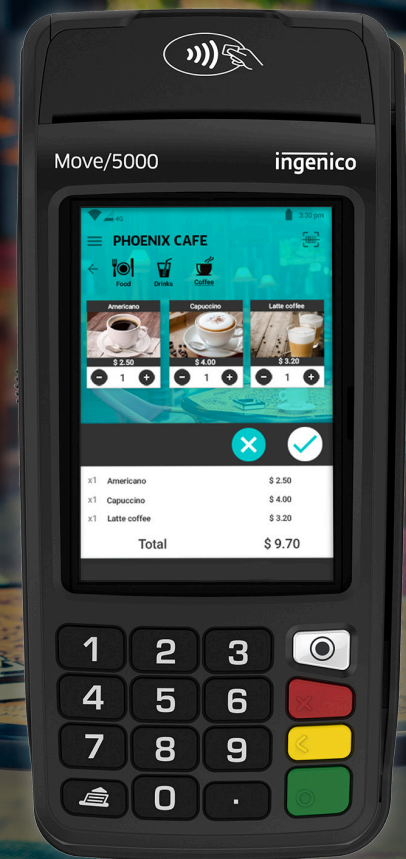


# Move/5000

The future of payments  
is mobility

- Enhanced customer engagement on the shop floor
- Enables multiple alternative payment methods
- Sleek design for high-end environments
- Intuitive interface for best-in-class user experience
- Never disconnect via automatic network switching
- Sustainable design and packaging



**Designed for both indoor and outdoor use, the compact Move/5000 is the perfect business companion. No matter the situation, whether it be a peak sales shopping day, a taxi or delivery driver darting around the city, or a customer enquiring about a product's stock, the Move/5000 gets the job done, hassle-free.**

Perfect for hospitality, high street and small merchants alike, the Move/5000 creates a seamless shopping experience that's free from the checkout. Through enhanced contactless processing and improved signature capture capabilities, this terminal enables a faster transaction flow to speed up the payment process.

### Ease of introduction

The Telium TETRA OS integrates with existing payment methods to ensure a seamless introduction into a business' payment environment. Merchants also have greater control over the payment experience that they're offering customers by utilising useful HTML5 applications.

### Alternative payment methods

From mobile wallets to traditional payments schemes, Move/5000 has it covered. The Move/5000 contains payment hardware such as NFC couponing, chip & PIN, swipe and sign, contactless and more to facilitate the processing of alternative payment methods - including those enabled by camera, like QR codes.

### Tough security

The Move/5000 is certified and fully compliant with the latest global and local PCI regulations. The Telium TETRA OS has been future-proofed with top-of-the-line cryptography software and Ingenico's world-class peer-to-peer encryption technology to keep data safe.

### Staying connected

Even on the go, those using the Move/5000 terminal will have strong connections to the internet. That's because this terminal utilises a wide range of wireless connectivity options and automatic network switching between 4G, 3G, 2G, Dual SIM, Bluetooth and WiFi - all fully optimised so that connection will always be viable.

### Enhanced design

A sleek all-black design brings an air of professionalism to this terminal, while its new and ultra-responsive rubber keypad improves PIN entry for customers.

### Easy to see, easy to use

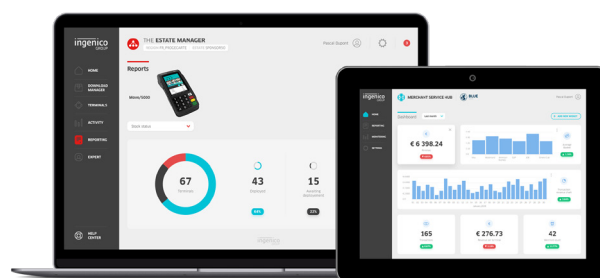
This terminal is dynamic by design, and its intuitive user interface - including powerful multimedia capabilities and a large 3.5 inch colour touchscreen - creates an optimal experience for customers.

### Keeping it green

As well as state-of-the-art manufacturing techniques enhancing the recyclability of this terminal range, paper consumption has been reduced on the Move/5000 thanks to new digital receipt solutions and digitised product documentation.

### Compatible with Ingenico's suite of services

Keeping the solutions connected, the Move/5000 works in unison with Ingenico's supporting service platforms, meaning merchants will have access to business services such as back office reporting and e-receipt management. Software updates and day-to-day support deliver a hassle-free experience for those using this innovative range.



<b>Processor</b>	Application and crypto processor	Cortex A5	●
<b>Memory</b>	Internal	512 MB Flash, 512 MB RAM	●
	External	MicroSD up to 32GB	●
<b>OS</b>		Telium TETRA	●
<b>SIM</b>		1 SIM	Optional
		2 SIM	●
<b>SAM</b>		2 SAM	Optional
		3 SAM	●
<b>Card readers</b>	Magstripe	ISO 1/2/3, 500K lifespan	●
	Smart card	EMV Level 1, 500K lifespan	●
	Contactless	EMV Level 1	●
<b>Display</b>	Colour	3.5" backlit, HVGA (480x320) pixels	●
<b>Touchscreen</b>	Resistive Capacitive		Optional
<b>Keypad</b>		16 keys, raised marking, backlit	●
<b>Audio</b>	Buzzer		●
	Speaker		Optional
<b>Video</b>	Audio Jack	Mono	Optional
		Stereo	Optional
<b>Video</b>	Video accelerator	H264 codec	●
<b>Data capture</b>	Positioning	GPS tracking	Optional
	Barcode reader	1D/2D	Optional
	Camera	5M pixels autofocus	Optional
<b>Battery</b>	Li-ion	2900mAh	●

<b>Thermal printer</b>	Speed in l/s	Paper roll cage	Up to 30 l/s 58 mm width x Ø 40 mm 58 mm width x Ø 25 mm	● Optional
<b>Terminal connectivity</b>	WAN		4G and/or 3G with fallback	Optional
	LAN		WiFi and/or Bluetooth	Optional
<b>Terminal connections</b>	Multicom		WAN + LAN	Optional
	USB			●
<b>Battery</b>	Power Supply		Host and slave	●
			Dedicated Power Jack	●
<b>Terminal size</b>	Li-ion		2900mAh	●
<b>Weight</b>			Ø 40 mm	●
			Ø 25 mm	●
<b>Environment</b>			169 x 78 x 57 mm (6.6x3.1x2.2")	●
			160 x 78 x 47 mm (6.3x3.1x1.9")	●
				●
<b>Accessory</b>			Operating temperature	●
			Storage temperature	●
			Operating humidity	●
<b>Security</b>			-10°C to +50°C (14°F to 122°F)	●
			-20°C to +55°C (-4°F to 131°F)	●
			85% non-condensing at 40°C (104°F)	●
<b>Accessory</b>	Privacy shield		Factory Mounted	Optional
	Car Charger			Optional
	Docking-station			●
<b>Accessory</b>			Charger	Optional
			2 RS232	Optional
			USB host	Optional
<b>Accessory</b>			USB slave	Optional
			Modem	Optional
			Ethernet 10/100 Base T	Optional
<b>Accessory</b>			Bluetooth	Optional
				●
				●